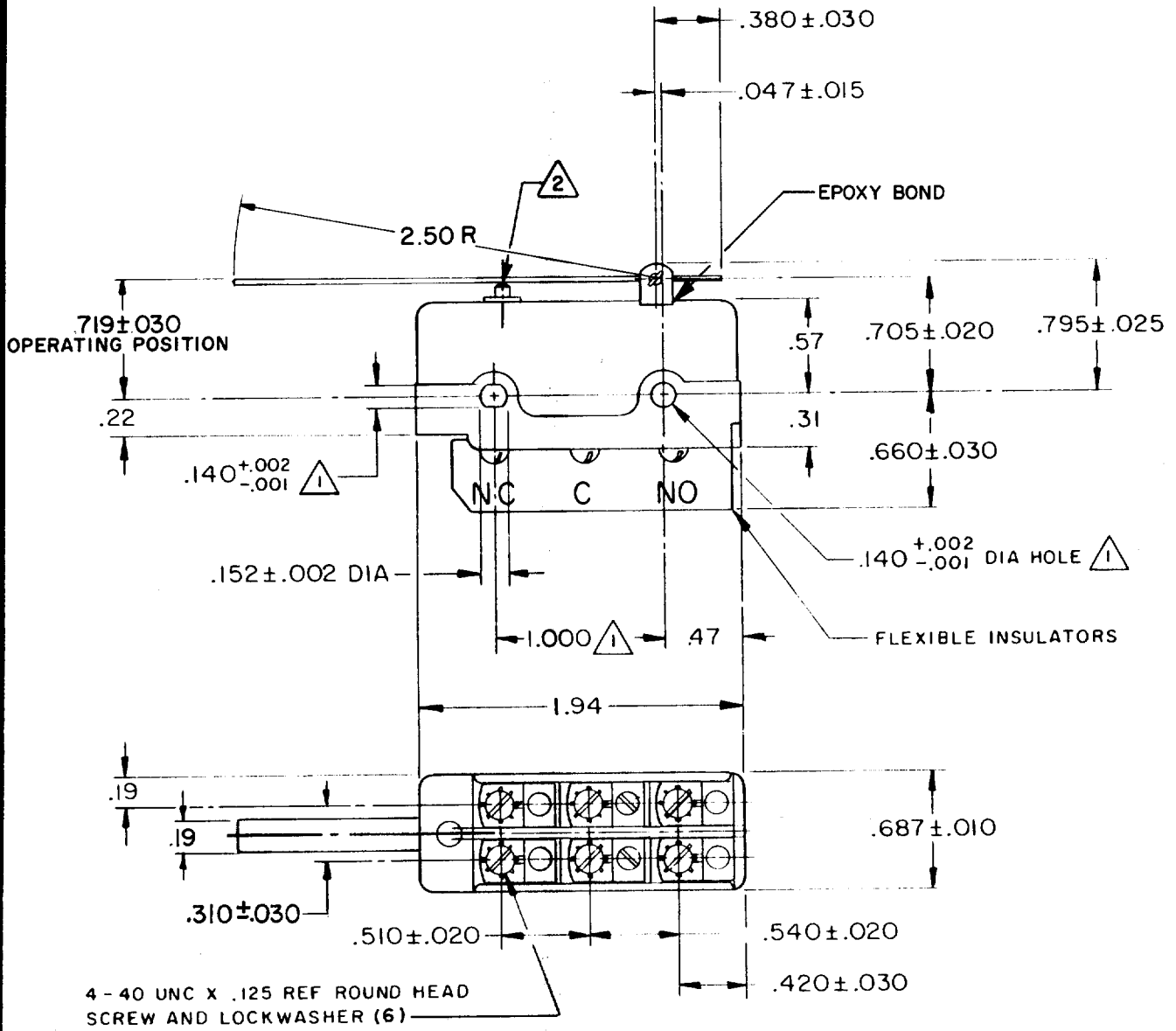


FED. MFG. CODE 91829

**DT-2RV3-A7**  
**M**  
 DRAWING NUMBER  
 ISSUE 9 15  
 X 12  
 REVISIONS  
 A CO17725 L E B 20 JUNE 63  
 B CO24941 M B S 2 DEC 68  
 C CO26075 M B S 26 AUG 69  
 D CO37528 C J H 31 AUG 76  
 E CO38280 P K 31 MAR 77  
 F CO46028 W J M 13 JUN 79  
 G CO61634 T S K 17 JUL 87  
 L E B 20 JUNE 63  
 L.S.D. 21 JUN 63  
 L E B 20 JUNE 63  
 FO-80378



NOTE -  
 (1) MOUNTING HOLES WILL ACCEPT PINS OR SCREWS OF .139 MAX DIA ON  $1.000 \pm .002$  CENTERS  
 (2) OVERTRAVEL TO BE MEASURED AT CENTER LINE OF PLUNGER

THIS DRAWING COVERS A PROPRIETARY ITEM AND IS THE PROPERTY OF MICRO SWITCH, A DIVISION OF MINNEAPOLIS-HONEYWELL REGULATOR CO. THIS DRAWING IS NOT TO BE COPIED OR USED WITHOUT THE APPROVAL OF MICRO SWITCH.

CHARACTERISTICS	ELECTRICAL DATA	SCALE FULL
OPERATING FORCE-----4-7 OZ	CONTACT ARRANGEMENT D P D T	DO NOT SCALE PRINT
RELEASE FORCE-----1/2 OZ MIN	UL LISTED-FILE E12252	UNLESS OTHERWISE NOTED
PRETRAVEL-----.270 MAX	CODE L59	DIMENSIONS ARE IN INCHES
DIFFERENTIAL TRAVEL-----.115-.190	10A-125 OR 250 VAC	<b>TOLERANCES ARE:</b>
OVERTRAVEL----- $\triangle 2$ .010 MIN	0.3A-125 VDC; 0.15A-250 VDC	ONE PLACE (.0) $\pm .030$
		TWO PLACE (.00) $\pm .015$
		THREE PLACE (.000) $\pm .005$
		ANGLES $\pm$
		WEIGHT .080 LB